



Term: Summer

Year: 3

Year 3 : Our Key Adults

Class teacher: Ms James

Support staff: Ms Conneely, Ms Maxime

Other important adults: Ms Mackenzie (Headteacher), Ms Mather (Deputy head), Mr Gorner- Patel (Assistant Head and SENDco), Chelsea Sewell (Admin officer), Mr Aaron (Attendance officer and PE coach).

Homework return and reading book change day- Thursday

Texts we will read in English lessons

Mathematics



- Manipulating the additive relationship and securing mental calculation
- Column addition
- 2, 4 and 8 timestables

For more information on the Maths curriculum we use at Holy Trinity, please click here:

[NCETM Year 3 Curriculum Map](#)

Reading

<p><b>Retrieval</b></p> <p>At the beginning of the story... At the end of the story... The character thinks that... This book belongs to the genre... The word/phrase is important because...</p>	<p><b>Inference</b></p> <p>The word 'tells us that...' because... The phrase 'tells us that...' because... The plot 'tells us that...' because... I think this because... The impression I get is '...' because... This suggests that '...' because... The character felt '...' because... The character is '...' because... The mood is '...' because...</p>	<p><b>Prediction</b></p> <p>I predict that' because... I believe the character will '...' because... The next event will be '...' this is because... I imagine the character will '...' because... Evidence from the text suggests that the character will '...' because...</p>
<p><b>Vocabulary</b></p> <p>The word 'suggests that...' The phrase 'suggests that...' The author has used the word/phrase '...' to show... I think the word '...' means... because...</p>	<p><b>Summarising</b></p> <p>The paragraph 'is about...' This chapter is about... This chapter is about... The key idea is '...' this is because... The theme is '...' this is because... The title '...' works well because... The book is about... It '...' words the character is... It '...' words the mood is...</p>	<p><b>Making links</b></p> <p>This reminds me of '...' because... This is similar to... The character 'reminds me of...' The setting is similar to... This makes me think of... The plot is similar to... I think the genre is '...' this is because... The theme is similar to' because...</p>

Strong reading skills are vital for success across the curriculum, but they also nurture creativity and expression. By seeing how authors use language, structure, and style our methodology ensures reading is about more than just recognising words — it's about understanding, enjoying, and thinking deeply about what we read.

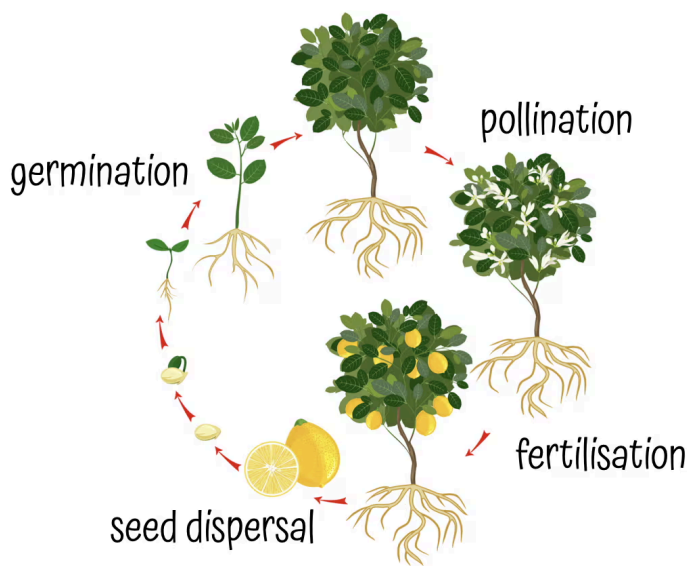
From year 2 upwards, children are taught strategies such as predicting what might happen next, working out tricky vocabulary, asking questions, and making inferences to uncover hidden meanings. These skills not only help them make sense of stories and information but also inspire their own writing. The more children read, the more ideas, words, and styles of writing they absorb, which strengthens their imagination and expression.

Science

Religious Education

Flowering plants, plant growth and plant life cycles- pupils will be taught to:

- identify and describe the functions of different parts of flowering plants: roots, stem/trunk, leaves and flowers
- explore the requirements of plants for life and growth (air, light, water, nutrients from soil, and room to grow) and how they vary from plant to plant
- investigate the way in which water is transported within plants
- explore the part that flowers play in the life cycle of flowering plants, including pollination, seed formation and seed dispersal



At Holy Trinity, we follow the RE Curriculum designed by the LDBS. More information about the LDBS curriculum can be found here:



<https://ldbs.co.uk/primary-re-syllabus#gsc.tab=0>

This term we will answer the following questions:

- What did the Buddha teach his followers about life?
- Who is Jesus?



## Geography

### Spain

- To locate continents and countries on a world map (including Europe and Spain/ UK)
- To locate a range of European countries on a map, & their capital cities (including London & Madrid)
- To understand that Spain is divided into 17 autonomous communities
- To locate significant places within Spain using 4 figure grid references
- To identify humans and physical geographical features within Spain
- To identify similarities and differences of living in the UK and Spain (i.e climate, trade)



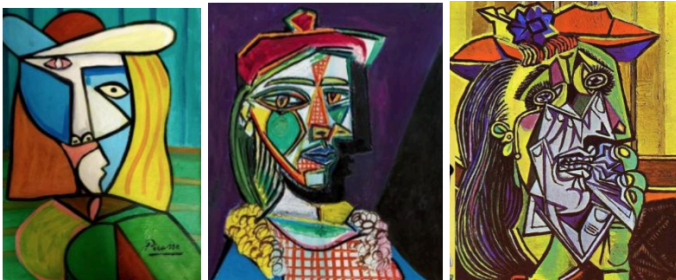
Art and Design Technology

Personal, Social, Health and

## Citizenship Education

### Spain - Picasso- Cubist portraits

- In Summer 1 Y3 will learn about Pablo Picasso, and specifically about cubist portraits. Pablo Picasso is, arguably, the greatest artist of the 20th century. Producing more than 20,000 works, including paintings and sculptures, he was the co-inventor of the cubist movement. He painted in various styles, and some of his most famous works are cubist portraits. His painting, The Weeping Woman, is one of the most famous pieces of art in the world.



In summer 2, Y3 will study Batik, and look at how artists across Africa use the technique to produce bold patterned fabrics. This links to their history topic about Benin. The children will look at the work of Yinke Shonibare.



PSHCE is taught using the Jigsaw scheme of work.



### PSHCE - Healthy Me

- I understand how exercise affects my body and know why my heart and lungs are such important organs
- I know that the amount of calories, fat and sugar I put into my body will affect my health
- I can tell you my knowledge and attitude towards drugs
- I can identify things, people and places that I need to keep safe from
- I can identify when something feels safe or unsafe
- I understand how complex my body is and how important it is to take care of it

### PSHCE - Relationships

- I can identify roles and responsibilities in families
- I can identify and practice being a good friend
- I can keep myself safe online
- I can explain how work of people around the world help influence my life
- I understand how my needs and rights are shared by children around the world
- I know how to show my appreciation for my family and friends.

Physical Education

Wider Curriculum

PE Day- Thursday. Please wear your PE kit to school every Thursday.

### Athletics

In this unit, the children will:

- Learn to control movement in response to instructions
- Demonstrate agility and speed. Jump for height and distance
- Throw with speed and power and apply
- appropriate force.

### Tennis/ Rounders

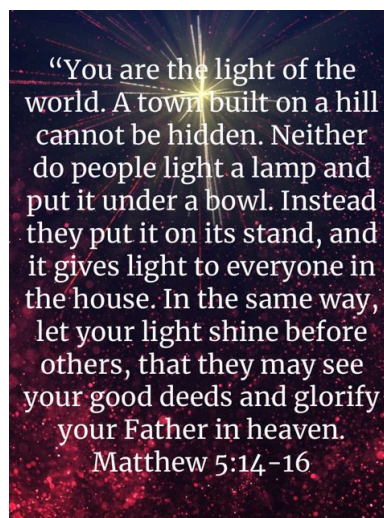
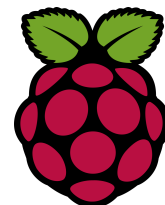
In this unit, the children will:

- Identify and describe some rules of tennis/ rounders
- Serve to begin a game and explore forehand hitting.



British Values are taught and discussed through our whole school acts of collective worship and in our RE and PSHE lessons.

- Music and singing are taught by our specialist music teacher.
- Computing is taught via iPads, or through hands-on practical resources using the scheme Raspberry Pi.



School Trips- This term Y3 will visit:

- Tate Modern
- The Garden Classroom at King Henry's Walk
- Sports Inspired Festival at Britannia Leisure Centre
- Southend on Sea

Many parents are keen to help their child by doing activities which support their education in school. Some suggested activities are listed below, linking to what we are studying this term.

- Visit Dalston Library and re-read some of the texts shown above. Consolidating texts is really helpful for your child to make connections with, and deepen understanding of, the stories they read. Get a free library card, allowing you and your child to select and borrow books of your choice
- Use BBC Bitesize to help you with your KS2 SATs revision- <https://www.bbc.co.uk/bitesize/articles/zrybvk7>
- Spend at least 10 minutes reading with your child daily. Also let them see you reading texts you enjoy to encourage them to read alone.
- Discuss different ways you and your child can be physically and mentally healthy.
- Talk about the relationships and roles of the people in your family.

- Make some simple Spanish food at home. Check out these recipes on BBC Bitesize: <https://www.bbc.co.uk/bitesize/topics/zv4d7sg>
- Take a trip to the National Gallery to see the permanent collection of Pablo Picasso's work there. <https://www.nationalgallery.org.uk/artists/pablo-picasso>
- Yinke Shonibare's work, Nelson's Ship in a Bottle, is located at the front of the National Maritime Museum on Greenwich. Take a trip to see it, and pair this visit with a trip to the newly designed children's play area in Greenwich Park, as well as a great indoor playspace- Ahoy, located in the museum itself, or The Cove, the playspace in the museum grounds.  
<https://www.rmg.co.uk/national-maritime-museum/attractions/ahoy-childrens-gallery>
- The children participate in Bikeability lessons when they are in Year 5. Practising at home will give them an advantage when that time comes. The Velodrome in Stratford offers great learn to ride sessions, starting with Velo-balance- where children can ride balance bikes and begin to learn how to pedal a 2-wheeler.  
<https://www.better.org.uk/leisure-centre/lee-valley/velopark/kids-activities>
- The children will attend swimming lessons in Year 5. Give them a headstart by booking some private lessons if you can. Find out more here:  
<https://www.better.org.uk/what-we-offer/lessons-and-courses/swimming>

#### Important dates for your diary:

- Monday 27<sup>th</sup> April- Y3 Parent / Carer Meetings
- Tuesday 28<sup>th</sup> April – Y3 Parent / Carer Meetings
- Wednesday 29<sup>th</sup> April - Holy Moly
- Wednesday 29<sup>th</sup> April Y1- Y6 - PTA School Disco
  
- Monday 5<sup>th</sup> May – Bank Holiday (school closed)
- Friday 8<sup>th</sup> May – 8.45- 9.15am- Family Friday
- Friday 15<sup>th</sup> May – After School- PTA Bake Sale
- Thursday 21<sup>st</sup> May – 3.45- 5.00pm- Holy Trinity's Got Talent
- Friday 22<sup>nd</sup> May – After School- PTA Bake Sale
- Friday 22<sup>nd</sup> May - Break up for half term
  
- Monday 1<sup>st</sup> June – Return to school
- Tuesday 9<sup>th</sup> June- Y3 Sharing Assembly- Parents/ Carers welcome
- Friday 12<sup>th</sup> June – 9.15am- Y3 Garden Classroom Trip
- Wednesday 17<sup>th</sup> June- Y3 and Y4 at Sports Inspired Festival
- Thursday 18<sup>th</sup> and Friday 19<sup>th</sup> June - School Photographs - Class Photos
- Friday 19<sup>th</sup> June- PTA Coffee Morning- Fathers' Day
- Wednesday 24<sup>th</sup> June- Holy Moly
  
- Thursday 2<sup>nd</sup> July- Transition Day
- Friday 3<sup>rd</sup> July (TBC)– Sports Day
- Thursday 9<sup>th</sup> July- last day of Enrichment Clubs
- Friday 10<sup>th</sup> July- 8.45- 9.15am- Family Friday
- Saturday 11<sup>th</sup> July - PTA Summer Fair
- Wednesday 15<sup>th</sup> July- Holy Moly

- Thursday 16<sup>th</sup> July- Last day of Extended day
- Friday 17<sup>th</sup> July- Whole School PTA trip- Southend on Sea
- Friday 17th July – End of term

-